

C.P. Blakely Elementary School
4815-43 Street
Sylvan Lake, Alberta
T4S 1A3
Telephone: (403)887-3570 Fax: (403)887-2841
<http://cpblakely.ca>
Chinook's Edge School Division #73

GRADE SIX SUPPLY LIST 2022/2023

The following is a start-up supply list for students entering into grade six.
More supplies may need to be purchased throughout the year as required.

- | | | | |
|----|---|---|---|
| 1 | Basic Calculator | 3 | Black Sharpies |
| 40 | Pencils | 1 | Pkg. Reinforcements |
| 5 | Highlighters | 4 | Duo Tangs |
| 4 | Erasers | 1 | Pkg. Pencil Crayons |
| 1 | Pkg. Felt Markers | 2 | Glue Sticks (Big Size) |
| 1 | Pair Scissors | 1 | Large Pencil Case/Box |
| 3 | Pkg. Dviders (8 tabs each) | 3 | <u>Thin</u> black markers for outlining |
| 1 | Sharpener with lid | 1 | 80 Page Lined Scribbler |
| 1 | Earbuds/Headphones | 1 | Kleenex box |
| 1 | Ruler | 4 | 1" Binders (red, blue, black, green) |
| 1 | Pair of white soled running shoes (to be left at school for indoors and for gym) | | |
| 1 | Gym change consisting of a t-shirt and shorts or sweatpants | | |

PLEASE LABEL ALL BELONGINGS!

OPEN HOUSE

Wednesday, August 31, 1-3 p.m.

Come meet your grade 6 teacher and put your supplies away!

(First day of school is Thursday, September 1st)



School Start

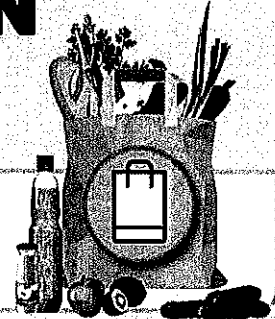
Back to School with School Start

Dear Parents/Guardians:

Your teachers at C.P. Blakely School are excited to offer the opportunity to purchase quality standardized school supplies through School Start for the 2022/2023 school year. This process will save you both time and money.

THE EARLIER YOU ORDER THE MORE YOU CAN WIN!

✓ **ORDER by July 8, 2022:
BE ENTERED TO WIN A \$1,000 GROCERY CARD!**



✓ **ORDER by August 8, 2022:
BE ENTERED TO WIN \$500 CASH!**



**Order by July 8, 2022 and you will be entered into both draws. **One winner per draw.*

Winners will be announced on our School Start Facebook page.

3 WAYS TO ORDER:



ONLINE: You can place your order online at www.schoolstart.ca.

Our site is best compatible with Firefox or Chrome.



PHONE: You can call our customer service centre at 1-800-580-1868 to place your order over the phone.



EMAIL: You can print and fill out the order form and return to our office via email to: info@schoolstart.ca.

HOME DELIVERY:

The supplies will be packaged and delivered directly to your house. If you have a P.O. Box, please use your 911 address. Because the kit (s) are delivered to your home, you will have the ability to:

- ✓ Pre-label your child's supplies
- ✓ Add supplies to your order for home use or for your child in another school

Thank you for your support!



OUR CALL CENTRE IS AVAILABLE if you have any questions or need any assistance ordering online: 1-800-580-1868

www.schoolstart.ca | info@schoolstart.ca | Ph: 1-800-580-1868



Starter Package

Qty. Description

- 3 School Start 8 Index Dividers (insertable tabs)
- 4 School Start Report Cover (3 Prong) - Assorted Colours
- 1 School Start 1" O-Ring Binder (Red)
- 1 School Start 1" O-Ring Binder (Green)
- 1 Bic Highlighter (Assorted Colours) - 5 pack
- 3 Sharpie Fine Point Permanent Marker (black)
- 1 Staedtler Coloured Pencils (pre-sharpened) - 12 pack
- 4 School Start White Premium Eraser
- 1 School Start Clear Plastic Ruler (inches/cm) - 12"/30 cm
- 1 School Start Plastic Pencil Box (8.4" x 5.6" x 2.5")

Qty. Description

- 1 Hilroy Coil Note Book (10 1/2" x 8") - 80 pages
- 1 School Start 1" O-Ring Binder (Black)
- 1 School Start 1" O-Ring Binder (Blue)
- 4 Staedtler Norica HB #2 Pencils (pre-sharpened) - 12 pack
- 1 Crayola Original Thick Washable Markers (Conical Tip) - 10 pack
- 3 Sharpie Ultra Fine Point Permanent Marker - Black
- 1 School Start 5" Pointed Scissors
- 2 School Start Clear Glue Stick - 21 g.
- 1 Texas Instruments Display Calculator TI-503 SV

Cost of Starter Package	\$ 74.41
--------------------------------	-----------------

Items required by teacher and to be ordered if you do not already have them

Description	Qty. Req'd	Price	Qty. Ordered	Subtotal
School Start Two Hole Pencil Sharpener w/ Container	1	2.98	_____	_____
School Start Reinforcements - 300 Pack	1	2.37	_____	_____
Royale Facial Tissue (2 Ply) - 126 Sheets	1	2.32	_____	_____
Maxell Stereo Headphones	1	5.33	_____	_____
Indoor Shoes (non-marking) - Purchased Elsewhere	1		_____	_____
Gym Strip - Purchased Elsewhere	1		_____	_____

Cost of Required Items	(prices include tax)	\$
-------------------------------	----------------------	-----------

Shipping	\$ 7.50
-----------------	----------------

Total Cost (Starter Package + Required Items + Shipping)	(prices include tax)	\$
---	----------------------	-----------

Contact Info / Payment

 Student Name (label to appear on supply box) Phone Number Email (summer contact info)

By Credit Card Payment: Visa Mastercard Cheque (made payable to: **School Start**)

 Card Number Expiry Date \$ _____

 Name as it appears on card Signature Amount

Your Order Will Be Delivered To Your Home. Please provide your house and street address. No P.O. Boxes.

 Address City Province Postcode